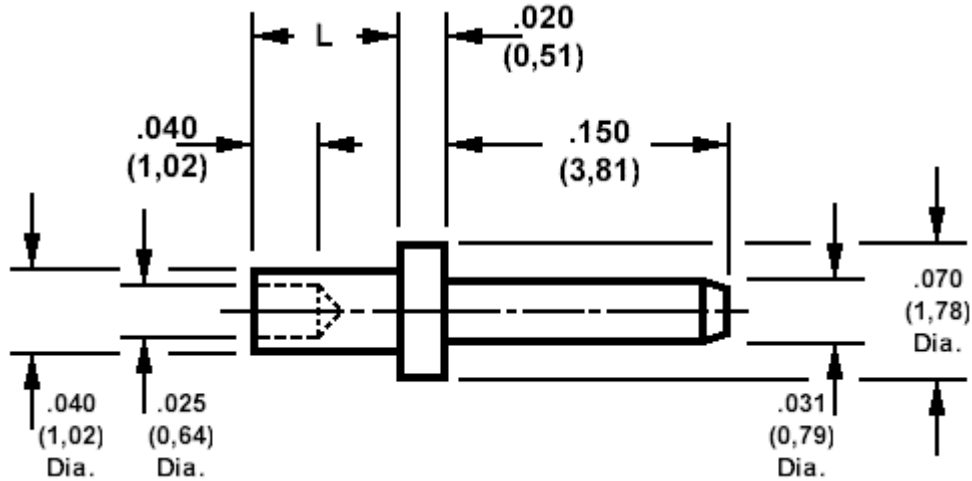


460-2984 Swage mount, .031 (0,79) diameter pin

Recommended mounting hole .043 (1,09) ± .002 (0,05), #57 drill



How to order code

460-2984-XX-YY-00

Basic Part No XX= L dimension, YY = Plating Finish

DIMENSIONS (XX)			
Basic Part Number	(XX)	L	For Board Thickness
460-2984	-01	.051 (1,30)	.031 (0,79)
	-02	.081 (2,08)	.061 (1,57)
	-03	.113 (2,87)	.094 (2,39)

MATERIALS			
Component	Material	Finish (-03)	Finish (-04)
Pin	Brass	Gold over Nickel	Electro-tin over copper

SWAGE TOOLING	
Recommended Swaging Tools:-	
Anvil	435-6514-01-00-00
Flare Punch	435-6690-01-00-00